



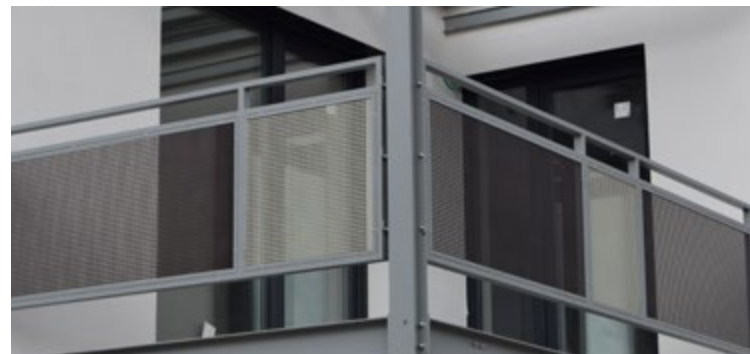
MART-FORMA KFT.

TOOL AND MACHINE MANUFACTURING



Established in 2013, our company is 100% in Hungarian ownership. Our qualified and highly experienced team has been working on the highest quality realization of incoming projects for nearly a decade. With our own staff of engineers and assembly workers, we carry out both design and manufacturing ourselves.

Our primary objective is to provide maximally customized, value creating services to our partners within our fields of activities, and to build such successful products from the ideas of our customers, which combine the most efficient solutions available. We focus greatly on remaining technically up-to-date, and we have committed ourselves to continuous innovation and professional development. Our own developments also help us to maintain a high technical standard.



Our primary activities

- **Production of JV1800 Paving Stone and Concrete Element Production Machine**
- **Tool and device manufacturing**
- **Manufacturing of unique target machinery**
- **Automation**
- **Tool renovation and repair**
- **Manufacturing of unique locksmith structures**

- **Service, maintenance**

The preservation of the technical condition and elimination of defects of our own manufactured devices and unique target machinery was automatically included within the scope of our services. Our number one priority is to sustain the satisfaction of our customers.

- **Technical consultation**

After an operational survey, our experienced engineers make suggestions for their optimization of existing, already operating production machinery, and upon acceptance of those by the client, we also carry out the realization of the suggested development, changeover.

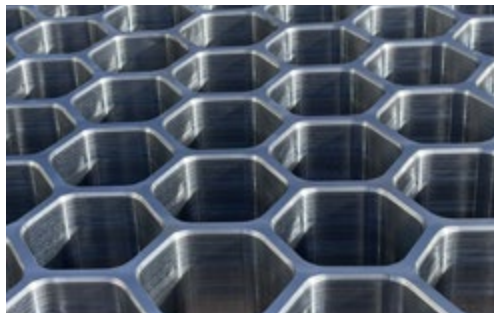


JV1800 Paving Stone and Concrete Element Production Machine

In the life of any manufacturing company, the first piece of equipment fully designed and built in-house – down to the very last bolt – always holds special significance. For us, this was the JV paving stone production machine, a system that has since seen multiple successful installations over the past years.

Technical specifications:

- Capacity: 1800 cycles / 8 hours; approx. 1.2 m² of paving stones per cycle
- Cycle time: 13–16 seconds
- Product height range: 40–250 mm



Tool and device manufacturing

We primarily carry out the design and manufacturing of tools and press plates required for the production of concrete parts, but we also accept orders from other areas of industry.

Carefully manufactured device parts are assembled by our qualified welding workers. In case of tools, all workpieces are subjected to nitridation and cementation after stress-relief, so that an adequate degree of hardness can be achieved. We use etching and stitching procedures.



Manufacturing of unique target machinery



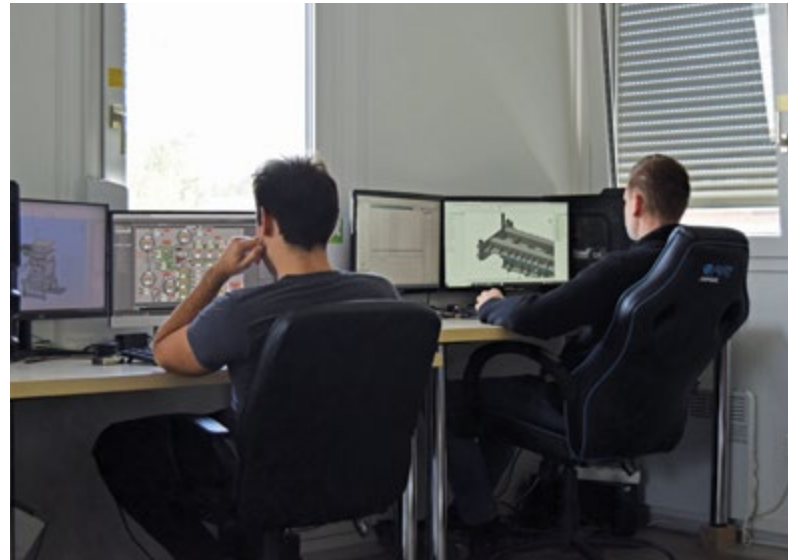
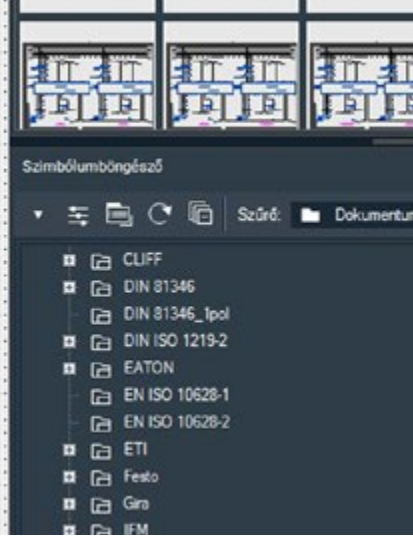
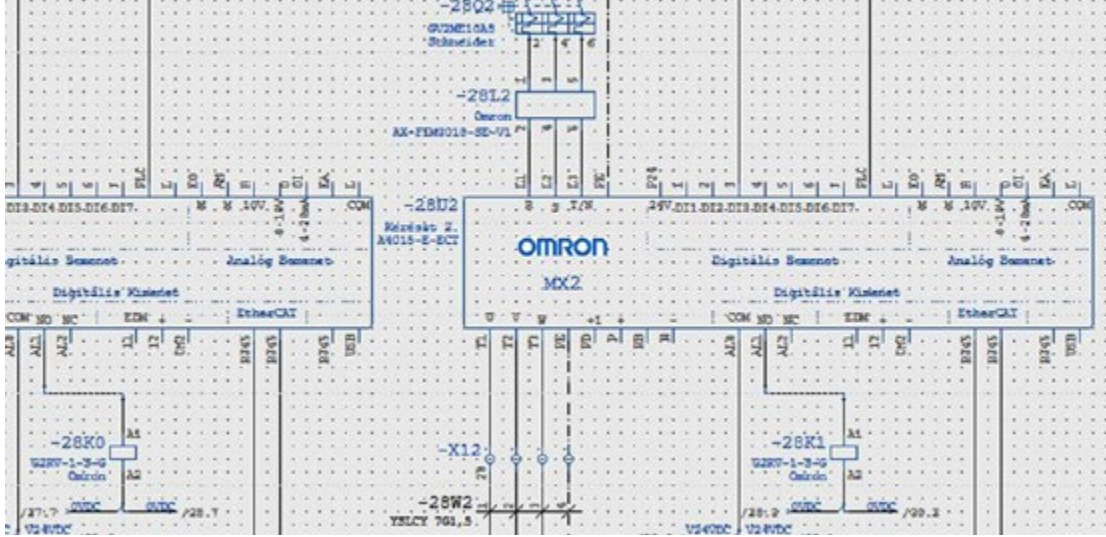
Instead of requesting a specific machine, our clients more often ask for special equipment as a solution to a given problem. In these cases we emphasize the learning of production and operational processes of the given company, as the actual solution may turn out to be the remedying of another problem through the development of a target machine instead of the original concept described by the customer.

After a site survey we design the required product and prepare its 3D model for demonstration. At the same time we prepare the electrical designs, on the basis of which the equipment can be automated.

The surface treatment of degraded structures is carried out at our plant site. On request we manufacture products with galvanized, or powder coated surface.

Some of the production lines we have designed and implemented

- Concrete parts and paving stone manufacturing machine
- Pallet feeder system
- Granulate spreader
- Special surface treatment system
- Paving stone antiquing and repackaging line
- Pasting machine



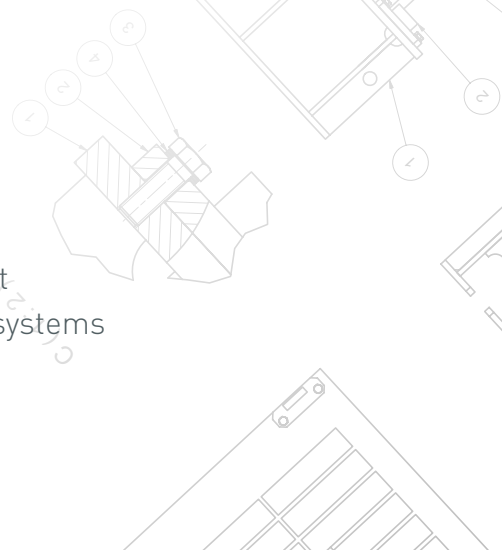
Automation

We carry out complex automation assignments – from design through implementation, until the on-site installation and commissioning of equipment.

We have experience in the programming of a major part of control units currently available on the market, and with the help of our internal training system, we are able to learn any newly appearing or unique customer requirements at ease. In case of program modification or the extension of workstations, we can flexibly adjust to software written by other companies.

Automation activities

- Control of own manufactured machinery
- Partial or complete automation of already operating equipment (planning, manufacturing, commissioning)
- Control of emergency shutdown and safety technology systems
- Programming and commissioning of robot technology equipment
- Design, assembly and maintenance of pneumatic and hydraulic systems





Surface cleaning and overlay welding followed by face milling



Repair with material replacement



Fracture repair



Surface cleaning



Tool renovation and repair



Most tool manufacturing companies only carry out the servicing of their own products. As an exceptional solution within the industry, we also undertake the renovation, repair and replacement of the press plate set of tools manufactured by other companies.

Among others, we have experience in the repair of tools of AME, HESS, Zenith, FBH, Rekes, Prometal, Ramatik, Omag, Metalika machines.

We first inspect the damaged or worn tools, familiarize with the operation of the related equipment, then we prepare a unique production template for the part that was damaged, or the one that needs to be replaced. Then we manufacture and install the new component or tool part. We keep the documentation required for repair, so in event of a defect or need for replacement, we can carry out servicing faster and more efficiently.



Manufacturing of unique locksmith structures

We use metal and steel raw materials, which allow us to design and manufacture any unique form, special shape, or structure with a special function.

After the discussion of requirements, we first display the structures on a 3D plan, then after acceptance, we prepare the prototype of the product. After the manufacturing of the first piece, we consult with the customer, and further modify the structure as necessary. Finally, we start series production when the final product is accepted.

- Heavy duty trolleys
- Steel structures for buildings
- Unique display stands

OUR DOMESTIC AND FOREIGN ACHIEVEMENTS



MART-FORMA KFT.
TOOL AND MACHINE MANUFACTURING



Abroad

barkman



DITON

GODELMANN
DIE STEIN-ERFINDER



Marshalls

MVB
Power of Stone

JNIOLOCK

Hungary

ABETON **VIRCOLON**
TÉGLAKO

ALTUS

amt

BARABÁS
STONE DESIGN

BARABÁS
TÉGLAKO

barátlakó
TÉGLAKO

BETON+

**BOLLENSTEIN
TERKŐ
CEGESPORT**

EGOM-FC

**KVARG
ÁSVANY**

**MBSA
KÖVÉSKÖRMEK
CONCRETE SOLUTIONS**

MB STONE
TÉGLAKO

Ravago
BUILDING
SOLUTIONS

wienerberger

CONTACT

Mart-Forma Kft.

Seat address: 8429 Porva, Fő u. 22., Hungary

Plant site: 8200 Veszprém, Tüzér u. 85., Hungary

☎ +36 30 139 2157

✉ info@martforma.hu

🌐 www.martforma.hu

📺 @martforma

📌 @mart-forma-kft

